



# INTERNATIONAL SCHOOL

February 22, 2016

## Upcoming Events and Deadlines

2/24	7 PM - 9 PM	Talent Show Auditions
3/4		Space Camp Fundraiser Ends
3/4 & 3/5	7 PM 2 PM or 7 PM	A Midsummer Night's Dream
3/9	12:15 PM	Staff Appreciation Luncheon
3/19	6 PM - 9 PM	Annual Spring Social and Fundraiser

## PTSA

### PTSA General Membership Meetings Canceled

The February and March PTSA General Membership Meetings have been canceled. Please refer to the ISPTSA website and the Monday Messenger for updates to future General Membership Meetings.



### PTSA Spring Social News

**Register Today for  
The Annual Spring Social and Fundraiser  
Giving..... Back to the Future**

**We will be "Giving... Back to the Future" of our students** at a new location this year, the **WILD ABOUT CARS GARAGE in Kirkland**, a unique venue filled with classic and exotic cars!

**WHY ATTEND?:** 100% of all proceeds fund needs that are not covered by the school's budget like YES counselor, additional funding for HS and 6th grade retreat, teacher and classroom needs, extended tutorial and much much more for every grade level throughout the year. The social is also F-U-N! We'll have great food and drinks in a fun, casual environment. Tickets are limited, so don't miss out this opportunity to support our kids, celebrate our wonderful IS community, and join together in one common goal.

**HOW TO REGISTER:** Ticket prices are \$55 per person. To register, visit <http://bis.maestroweb.com>. **Doors open Sat. 3/19 at 6:00 pm.** Smart Casual attire is encouraged, but, please know **your presence is what matters most.**

**GET INVOLVED:** Can't attend? Donate, procure, or volunteer at <http://bis.maestroweb.com>. The Spring Social Committee is still accepting auction item donations and event sponsorships, so please consider supporting the PTSA in this way if you are able. Please reach out to [sylvia.abrahamsson@hotmail.com](mailto:sylvia.abrahamsson@hotmail.com) if interested, or if you have any questions about the event. We hope to see you there!

## IS Student Directory

International School  
Home of the Titans  
Student Directory

## In This Issue

[Monday Messenger Time Out](#)

[Spring Social](#)

[Student Directory](#)

[IS Fun Run](#)

[WWW.ISPTSA.ORG](http://WWW.ISPTSA.ORG)

[Staff Appreciation Luncheon](#)

[Labels for Education](#)

[Titan Talent Show](#)

[Girls Who Code Summer Program](#)

[Space Camp Fundraiser](#)

[A Midsummer Night's Dream](#)

[The Little Mermaid](#)

[Newport HS Cross Country Camp](#)

[Bellevue Lacrosse](#)

[Sammamish Interlake Lacrosse](#)

[Messenger Submissions](#)

[Featured Article](#)

[International School Store](#)

[Contact Us](#)

## School Directory and Links

ATTENDANCE 425-456-6545  
MAIN OFFICE 425-456-6500  
COUNSELING 425-456-6542  
REGISTRAR 425-456-6535

[IS School Website, Calendar & Titan Times](#)

[IS Staff Directory](#)

[Aspen](#)

[Bellevue School District Website](#)

[Bellevue Schools Foundation](#)

## Supporting PTSA

You can donate at any time by simply writing your check to the International School PTSA and sending it to school: 445 128th Ave. SE, Bellevue, WA 98005 Or even easier - just donate via PayPal!

Will your employer match your IS contributions?



## International School Store

Show your school spirit! Shop for sweatshirts, t-shirts, duffel bags and more! Visit the [International School Fieldhouse store](#). Proceeds benefit the

Have you checked out the new directory? Remember that as a member of the PTSA, you automatically receive a copy.

If you have information that needs to be updated, please email Leo de Barros Barreto at [vpcommunications@isptsa.org](mailto:vpcommunications@isptsa.org).



International School ASB.



**INTERNATIONAL SCHOOL**

**5K SPRING FUN RUN**

### It's Back!

Join us on APRIL 23rd, 2016 at 9am for the 3rd annual Bellevue International 5K Fun Run.

This is a trail run, walk or jog through Wilburton Park, beginning at the school.

Registration is \$20, all proceeds go to International School PTSA. During registration, participants can also make a contribution to [missingkids.org](http://missingkids.org).

Register now at <http://ISFunRun.com>

For more information, or to help with volunteer opportunities on the day of the race, email Sara and Bryan Dawson at [bryanandsara@outlook.com](mailto:bryanandsara@outlook.com).

### Contact Us:

**President: Betsy Johnson**  
E-Mail: [president@isptsa.org](mailto:president@isptsa.org)

**President-Elect: David Doud**  
E-Mail: [pres-elect@isptsa.org](mailto:pres-elect@isptsa.org)

**VP - Outreach: Susan Hainze**  
E-Mail: [vpoutreach@isptsa.org](mailto:vpoutreach@isptsa.org)

**VP - Community: Janice Zahn and Liying Tan**  
E-Mail: [vpcommunity@isptsa.org](mailto:vpcommunity@isptsa.org)

**VP - Fundraising: Sylvia Abrahamsson**  
E-Mail: [vpfundraising@isptsa.org](mailto:vpfundraising@isptsa.org)

**VP - Communications: Leo de Barros Barreto**  
Email: [vpcommunications@isptsa.org](mailto:vpcommunications@isptsa.org)

**Treasurer One: Caroline Lee**  
E-Mail: [treasurer1@isptsa.org](mailto:treasurer1@isptsa.org)

**Treasurer Two: Wei Xiong**  
E-Mail: [treasurer2@isptsa.org](mailto:treasurer2@isptsa.org)

**Secretary: Kerste Helms**  
E-Mail: [secretary@isptsa.org](mailto:secretary@isptsa.org)

**Membership: Carolyn Watson**  
E-Mail: [membership@isptsa.org](mailto:membership@isptsa.org)

**Advocacy: Marjie Loforte**  
E-Mail: [advocacy@isptsa.org](mailto:advocacy@isptsa.org)

**Monday Messenger: Stephanie Winkler-Hadley**  
E-Mail: [news@isptsa.org](mailto:news@isptsa.org)

**PTSA Website:** [www.isptsa.org](http://www.isptsa.org)

**Newsletter Submissions:** [news@isptsa.org](mailto:news@isptsa.org)

### [www.ISPTSA.org](http://www.ISPTSA.org)

Visit our website keep informed about what is going with ISPTSA including meetings, programs and community events and activities. We hope it will be your home for joining the ISPTSA, volunteering, signing up for the Messenger weekly newsletter and keeping current on what is happening at the school.

Please take a moment to:

- 1) Create an ISPTSA account or update your current information. We will be using this for directory information. We will also have an online directory which will be available to ISPTSA members.
- 2) Join the ISPTSA, just click on the link that says Join.
- 3) Sign up for the Monday Messenger weekly e-newsletter, this is the best way to get the most current information on what is happening at school.
- 4) Volunteer - There are lots of ways to volunteer, both from home and at school. Parent involvement in creating and staffing programs such as Reflections, Staff Appreciation, Grade level representatives, awarding grants and editing the website is what makes IS unique.
- 5) Donate - Your donations to the PTSA allows us to invest, approximately \$100,000 a year toward the school's mission of academic excellence through a broad spectrum of curriculum extension grants, programs, clubs, and community building.

### School News

#### Staff Luncheon Hosted by 10th Grade Families

The March staff appreciation luncheon is March 9th and will be hosted by the fabulous families of the 10th grade, Class of 2018 (that's us!). The theme for the luncheon is "Italian Lunch" and we welcome all your delicious family or store bought favorites! Let's show our APPRECIATION to the staff and start this year with a bang.

Please sign up using the link below. You will also receive an email with the link in your inbox this week- <http://www.signupgenius.com/gq/20F054FA8AF2CA57-10th>. The food portions you make should serve between about 12 people. Please have your contributions delivered to the Staff Room by 12:15 on March 9th. If possible, please bring Warm Soups in Crock Pots. Please bring other food in/on disposable containers or plates if possible (or label your dish with your name so it can be returned to you).

The Staff is so appreciative of the luncheons and your involvement is so important in making this event a huge success. Any questions please contact Vaiju Bal ([mld.vmb@gmail.com](mailto:mld.vmb@gmail.com)).

Thanks so much for your support.



## LabelsForEducation.com

### Labels and Box Tops for Education - Submit Now!

In the past few years participation in Labels for Education has declined and as a result, Campbell has come to the very difficult decision to wind down the LFE program.

The program will continue exactly as is for the remainder of the 2015-2016 LFE program year, so there is still time to earn points for merchandise for International School.

Important notes:

- Not all participating products will have the Labels for Education coupon, you can check participating products here: <http://www.labelsforeducation.com/Earn-Points/Participating-Product>
- It is important to include the entire UPC code.
- We will be making a bonus point submission in February, so if you have labels at home, please turn into the school office this week in the BOX TOPS for EDUCATION box.

March 1st is also the deadline for Box Tops for Education spring submissions, so please clean out and hand in your stash of Box Tops for Education coupons also. Expired coupons cannot be redeemed.

### Titan Talent Show Auditions Wed. 2/24

Hey Titan parents! Is your child amazingly talented? I know they are. Encourage them to participate in this year's Talent Show, taking place March 18th and 19th.

All kinds of acts are welcome, from singing, to dancing, to artistic interpretations of poetry. Auditions will be February 24th, and we encourage anyone who thinks they might want to participate to come out and give it a try.



### SUMMER IMMERSION PROGRAM

The [Girls Who Code Summer Immersion Program](#) is a **FREE** seven-week introduction to computer science for girls going into 11th and 12th grade.

Girls Who Code is a national non-profit organization dedicated to closing the gender gap in technology. Our programs educate, inspire, and equip girls to pursue opportunities in computing.

Apply Now for Summer 2016: [www.girlswhocode.com/applynow](http://www.girlswhocode.com/applynow)

**Application closes March 1, 2016**

## Space Camp Focus Week Fundraiser

WE ONLY NEED 497 more bags of clothing!!!! Please clean out your closet and give us your old clothing, shoes and stuffed animals. Shoes must be placed in a separate bag. Collect donation items in a plastic bag and place in the collection box at the top of the gym stairs.

This is a fundraiser for the kids going to SPACE CAMP in Huntsville, Alabama. Please submit your donations no later than Fri. 3/4.

Thank you very much!!!



The Titan Players are excited to present, William Shakespeare's "A Midsummer Night's Dream."

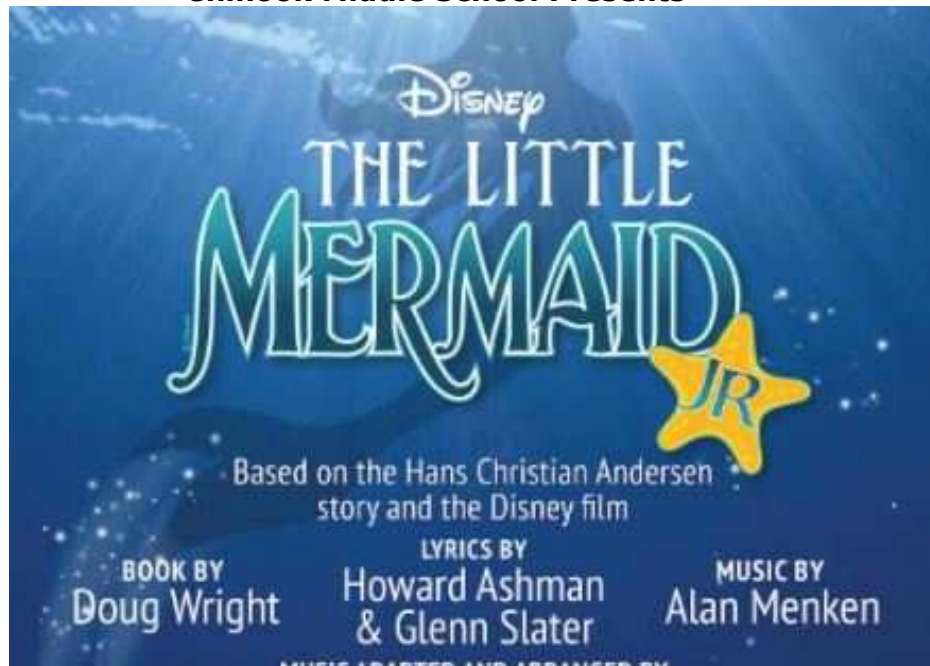
We would love to see the I.S. community come out in full force and support our drama program.

Dates and times for this performance are:

- Fri. 3/4 at 7 PM March 4th
- Sat. 3/5 at 2 pm and 7 pm

Ticket information is available by calling 425-456-6500 or e-mailing [gathk@bsd405.org](mailto:gathk@bsd405.org).

## Chinook Middle School Presents





MUSIC ADAPTED AND ARRANGED BY  
David Weinstein

# MARCH 4 & 5 AT 7PM

Bellevue High School Performing Arts Center  
10416 SE Wolverine Way, Bellevue, WA 98004

Tickets: \$10. Buy tickets during lunch or after school starting March 2, or at the door on the night of the performance.

MASTER CARPENTER      DIRECTOR      STAGE MANAGER  
Michael Fondahn      Lisa Kraus      Max Page

CHOREOGRAPHER & VOCAL DIRECTOR  
Angela Rinaldi

## Sports Opportunities



**Newport**

### High School Cross Country Team Camp

The Newport High School Cross Country (XC) team camp at Fort Flagler is July 25 to 29, 2016. All students residing in the Newport High School boundary including incoming freshmen who are interested in the team are welcome! It's a great way to get to know your team and coaches.

Registrations must be postmarked by Friday February 26 in order to apply at the lowest cost.

For more information including registration forms and fee deadlines, please refer to the [Newport High School 2016 XC Camp](#) web page.



### Bellevue Wolverines Girls Lacrosse Registration Now Open!

The Bellevue Wolverines Girls Lacrosse registration is now open for the 2016 spring season! Beginners welcome! Visit [www.bellevuegirlslax.com](http://www.bellevuegirlslax.com) to learn more and to register.

Join us to find out why lacrosse is the fastest growing sport in Washington and the U.S.. We field teams for girls in grades 1-12. The season begins in late February and runs through the first weekend in June.



**Signup**

### Now! Boys Spring Lacrosse

GET INTO THE GAME!  
Timing: February - May

Schedule: 2-3 practices and 1 game per week  
Scholarships available

Join the fun! Visit [www.silacrosse.org](http://www.silacrosse.org), tell your friends and be part of a team experience!

Open to grades 3-12. Both new and experienced lacrosse players welcomed! Don't Delay-Register Online Today for the Boys Spring 2016 season with Sammamish Interlake Lacrosse Club.

## Messenger Submissions

Want to submit information to publish in the Messenger? Please submit your information by **FRIDAY**. (*Submissions are subject to PTA approval*). Plain text is preferred, although you are welcome to send along an image or icon to include. Need to link to a registration form? Send us the link to include or a pdf copy. *Note: you will no longer receive an automatic confirmation response when submitting.*

Questions or submissions should go to [news@isptsa.org](mailto:news@isptsa.org)

### [Forward email](#)



This email was sent to news@isptsa.org by [news@isptsa.org](mailto:news@isptsa.org) | [Update Profile/Email Address](#) | Rapid removal with [SafeUnsubscribe™](#) | [About our service provider.](#)



International School PTSA | 445 128th Ave. SE | Bellevue | WA | 98005